



G5B

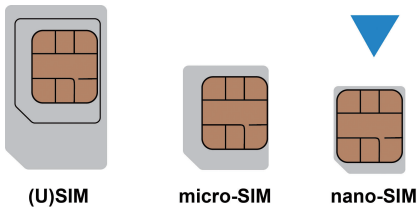
Let's go

Getting started with your device

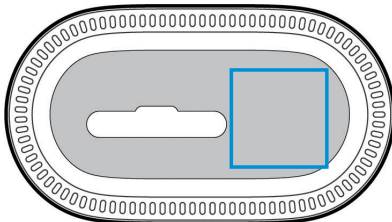
# 1. Prepare

---

- A valid nano-SIM card.



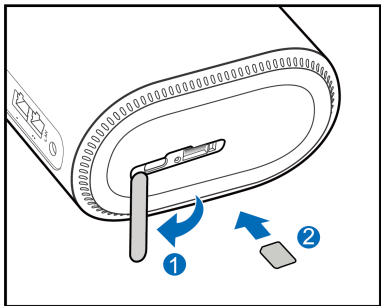
- View the label on your device to get the default information.



## 2. Insert the nano-SIM Card

---

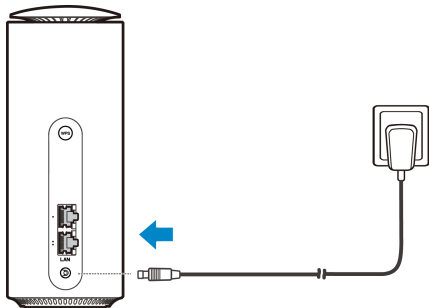
Open the slot cover at the bottom of the device and insert the nano-SIM card.



### 3. Power on Your Device

---

Connect the power adapter to your device and then your device will be powered on and connect to the Internet automatically.



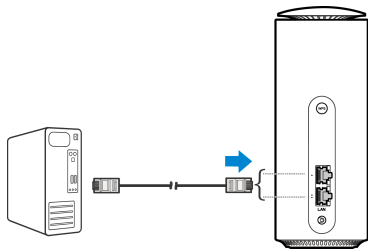
## 4. Access the Internet

---

- **Wi-Fi:** Get the default SSID and password on the label and connect to the Wi-Fi network with your mobile device, and then access the Internet.



- **Network cable(RJ45):** Connect with the computer via LAN ports and then access the Internet.



## 5. Change Your Device Settings

---

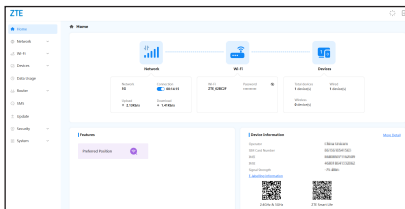
You can change the device settings by logging in to the 5G CPE management web page.

1. View the label on your device to get the default *Device Manager Website IP address* and *Password*.
2. Launch the Internet browser and enter the *Device Manager Website IP address* in the address bar.
3. Input the password and then click **Login**.



Password  

4. After the 5G CPE management web page is opened, you can change the Wi-Fi SSID, password or other settings.

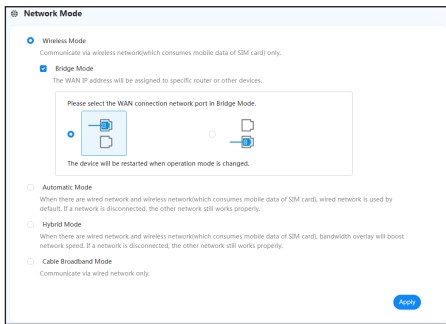


# Bridge Mode

---

Your device supports bridge mode and you can use this service from your service provider to access the Internet.

1. Ensure that your device can connect to the Internet by using your nano-SIM card automatically.
2. Log in to the 5G CPE management web page.
3. Select **Network > Network Mode > Wireless Mode > Bridge Mode**, select the WAN connection network port and then click **Apply**. The device will be restarted.



4. Connect the computer or other cable-connected client to the LAN port you selected and the client can obtain the IP address from the WAN DHCP host and connect to the Internet directly.

**NOTE:**

All clients connected to your device can access the Internet. You can use those clients to log in to the 5G CPE management web page.

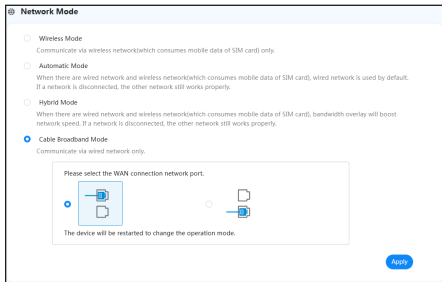
## Cable Broadband Mode

---

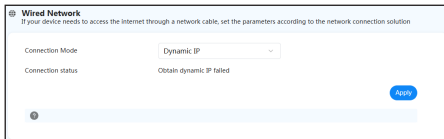
Your device supports cable broadband mode and you can use this service from your service provider to access the Internet.

1. Log in to the 5G CPE management web page.
2. Select **Network > Network Mode > Cable Broadband Mode**, select the WAN connection network port and then click **Apply**. The device will be restarted.





3. Connect the broadband service network to the LAN port you selected.
4. Connect to the Wi-Fi network with your mobile device and then log in to the web page again.
5. Select **Network > Wired Network > Connection Mode** and then set the detailed parameters given by your service provider.



6. Use your clients to access the Internet.

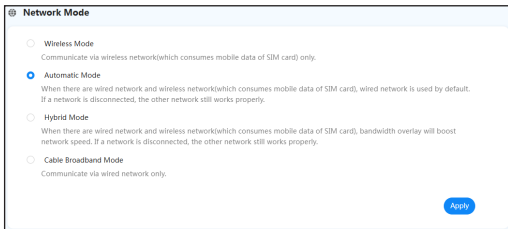
## Dual-network Modes

---

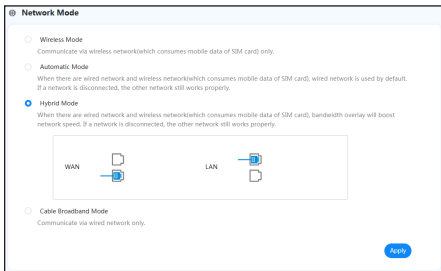
Your device supports dual-network modes (Automatic Mode and Hybrid Mode). You can use the nano-SIM card and broadband service network port (WAN) to access the Internet.

1. Insert the nano-SIM card.
2. Log in to the 5G CPE management web page.
3. Select **Network > Network Mode > Automatic Mode** or **Hybrid Mode** and then click **Apply**. The device will be restarted.

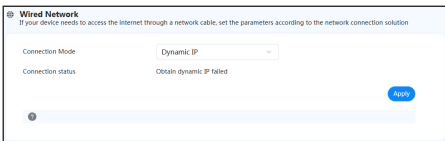
► **Automatic Mode:** The wired network is used as the default network. If the wired network is disconnected, you can use the nano-SIM card to access the Internet.



- **Hybrid Mode:** You can use two types of networks to access the Internet at the same time to increase the network speed. If one is disconnected, the other still works properly.



4. Connect the broadband service network port to the LAN2 port.
5. Select **Network > Wired Network > Connection Mode** and then set the detailed parameters given by your service provider.



6. Use your clients to access the Internet.

## WPS

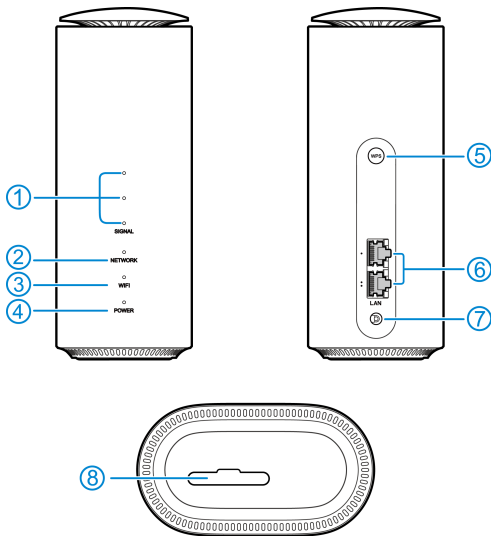
---

Your device supports the WPS function. You can use this function to connect a client to your device.

1. Press the **WPS** button on your device to activate the WPS function.  
The WIFI indicator is blinking.
2. Enable the WPS function on your client.
3. Follow the system prompts on your client to establish the connection.

## Indicator Lights and Interfaces

---



---

1. SIGNAL  
(Three lights)

On: Three lights show the signal strength. More lights on means better signals.

Off: There is no signal or no nano-SIM card inserted.

---

2. NETWORK

Red solid: The device is in error status.

- The device is not registered to the mobile network.
- There is no nano-SIM card inserted.
- There is no network service available.
- The device is registered to the mobile network but the data service is not connected.

Blue solid: The device is registered or connected to the LTE mobile network.

White solid: The device is registered or connected to the 5G network.

White blinking: The software is being upgraded.

Red blinking: After the Data Usage Settings is set, the used data/time traffic reaches the preset value.

---

3. WIFI

On: Wi-Fi works normally.

Blinking: WPS is activating.

Off: Wi-Fi is off.

---

---

4.	POWER	On: The device is powered on. Off: The device is powered off.
5.	WPS key	Press this key to activate the WPS function. Press and hold for about 10 seconds to power off your device and then press and hold for about 2 seconds to power on your device.
6.	LAN ports	Connect to the WAN in Cable Broadband Mode or connect to a PC.
7.	Power port	Connect to the power adapter.
8	nano-SIM card slot and reset hole	Insert your nano-SIM card. Reset hole: Press and hold for about 2 seconds to restore your device to the factory settings.

---

# Troubleshooting

---

## Internet Related Problems

---

Symptoms	Possible Problems / Solutions
I cannot access the Internet at all.	<ul style="list-style-type: none"><li>• Please check your management settings.</li><li>• Please wait 1~ 2 minutes for the router to initialize.</li><li>• Check your network indicators.</li></ul>
The download or upload speed is very slow.	The speed is dependent on signal strength. Check your signal strength and network type.
I cannot visit the 5G CPE management web page.	<ul style="list-style-type: none"><li>• Enter the correct IP address. You can view the label on your device to get the default IP address.</li><li>• Only use one network adapter in your PC.</li><li>• Do not use any proxy server.</li></ul>
I cannot establish the Wi-Fi connection between my device and the client.	<ul style="list-style-type: none"><li>• Make sure the Wi-Fi function is active.</li><li>• Refresh network list and select the correct SSID.</li><li>• Check the IP address to make sure your client can obtain an IP address automatically in the Internet protocol (TCP/IP) properties.</li><li>• Type the correct network key (Wi-Fi password) when you connect to the device.</li></ul>

---



## Others

Symptoms	Possible Problems / Solutions
Problems with the passwords.	<ul style="list-style-type: none"><li>• For the default Wi-Fi connection password and the default password of the 5G CPE management web page, please check the label on the device.</li><li>• If you have changed the passwords and forgotten them, you need to restore the device to the factory default settings.</li></ul>

## Getting More Help

---

You can get help by:

- Sending an email to **mobile@zte.com.cn**
- Visiting **<https://www.ztedevices.com>**



**ZTE Smart Life**  
Easy to manage your device

# LEGAL INFORMATION

---

**Copyright © 2025 ZTE CORPORATION.**

**All rights reserved.**

No part of this publication may be quoted, reproduced, translated or used in any form or by any means, electronic or mechanical, including photocopying and microfilm, without the prior written permission of ZTE Corporation.

## **Notice**

ZTE Corporation reserves the right to make modifications on print errors or update specifications in this guide without prior notice.

## **Disclaimer**

Images and screenshots used in this guide may differ from the actual product. Content in this guide may differ from the actual product or software.

## **Trademarks**

ZTE and the ZTE logos are trademarks of ZTE Corporation. Other trademarks and trade names are those of their respective owners.

**Version No.:** R1.0

## Warning and Notice

---

### Safety Precautions

- Some electronic devices may be susceptible to electromagnetic interference. Locate the device away from TV set, radio and other electronic equipment to avoid electromagnetic interference.
- The device may interfere with medical devices like hearing aids and pacemakers. Consult a physician or the manufacturer of the medical device before using it.
- Please keep yourself at least 20 centimeters away from your device.
- Do not use your device in dangerous environments such as oil terminals or chemical factories where there are explosive gases or explosive products being processed.
- Please use original accessories or accessories that are authorized by ZTE. Unauthorized accessories may affect the device performance, damage the device or cause danger to you.
- Do not attempt to dismantle the device. There are no user-serviceable parts.

- Do not allow the device or accessories to come into contact with liquid or moisture at any time. Do not immerse the device in any liquid.
- Do not place objects on top of the device. This may lead to overheating of the device.
- The device must be placed in a well-ventilated environment for use.
- Do not expose the device to direct sunlight or store it in hot areas. High temperature can shorten the life of electronic devices.
- Do not place or use your device inside or near heating equipment, high-pressure containers or strong electromagnetic environment, such as water heaters, microwave ovens, or hot cooking utensils. Otherwise, your device may be damaged.
- Do not allow children to play with the device or power adapter.
- The device is for indoor use only. Do not use the device outside.
- For pluggable equipment, the socket-outlet shall be installed near the equipment and shall be easily accessible.

## **Cleaning and Maintaining**

- Use an antistatic cloth to clean the device. Do not use chemical or abrasive cleanser as these could damage the plastic case. Turn off your device before you clean it.
- Use the device within the temperature range of 0 °C ~ +40 °C, and the storage temperature range is -40 °C ~ +70 °C. The humidity range is 5%~95%(Non-condensing).
- Do not use your device during a thunderstorm. Remove the mains power pack from the wall socket.

## **Limited Warranty**

This warranty does not apply to defects or errors in the product caused by:

- i. Reasonable abrasion.
- ii. End users' failure to follow ZTE's installation, operation or maintenance instructions or procedures.
- iii. End users' mishandling, misuse, negligence, or improper installation, disassembly, storage, servicing or operation of the product.
- iv. Modifications or repairs not provided by ZTE or a ZTE-certified individual.

- v. Power failures, surges, fire, flood, accidents, and actions of third parties or other events outside ZTE's reasonable control.
- vi. Usage of third-party products or usage in conjunction with third-party products if such defects are due to the combined usage.
- vii. Any other cause beyond the range of normal usage intended for the product.

End users have no right to reject or return the product, or receive a refund for the product from ZTE under the above-mentioned situations.

This warranty is end users' sole remedy and ZTE's sole liability for defective or nonconforming items, and is in lieu of all other warranties, expressed, implied or statutory, including but not limited to the implied warranties of merchantability and fitness for a particular purpose, unless otherwise required under the mandatory provisions of the law.

## **Limitation of Liability**

ZTE shall not be liable for any loss of profits or indirect, special, incidental or consequential damages resulting from or arising out of or in connection with using of this product, no matter whether or not ZTE had been advised, knew or should have known of the possibility of such damages, including, but not limited to lost profits, interruption of business, cost of capital, cost of substitute facilities or product, or any downtime cost.

ZTE CORPORATION  
NO. 55, Hi-tech Road South, Shenzhen, P.R.China  
Postcode: 518057